

IRIS

Technical Overview

Overview

- **Why Improvements?**
- **About IRIS 5.0**
- **Different Database Options**
- **Benefits of IRIS 5.0**
- **System Requirements**
- **Installation Process**

Why Improvements?



Legacy Access IRIS

- Limitations in Database size 2GB
- Speed was a concern with bigger databases
- Limited Multi User Access
- Microsoft phasing out of Visual Basic Applications (VBA) technology

About IRIS 5.0



Technology: Microsoft.NET Framework with C#

Platform: Windows Presentation Foundation (WPF)

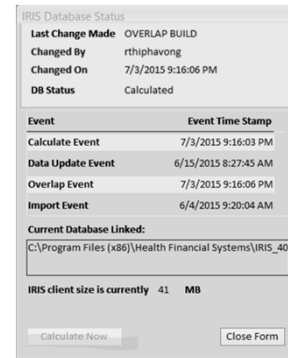
Database: SQL Compact Edition and SQL Server Express

- Increased Disk Space
- Improved Speed
- Versatile in other technologies

Benefits of IRIS 5.0

Functionality:

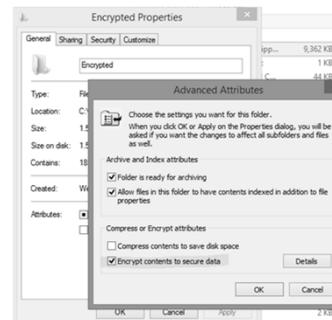
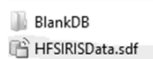
- No more calculate buttons
- Ease of navigation
- Automated import process
- Ability to import M&A record in CSV, XLS and XLSX
- Net Sync Compatible
- Event Tracking



Different Database Options

SQL Compact Edition

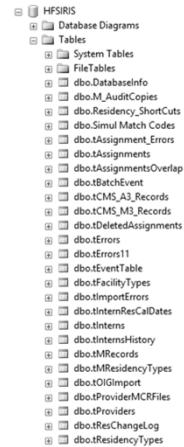
- Comes with Installation called HFSIRISData.sdf
- 4GB Storage Space
- Portable, easily moveable
- 5-10 Concurrent Users
- Security:
 - Files be located in users secure network
 - As an added protection, we recommend Encrypting working Database folders.
 - Another added protection, has internal UserName/Password to access DB



Different Database Options

SQL Server Express

- DB Admin installed SQL Express on your network server and we provide scripts to build the tables.
- 10GB Storage Space
- Improved Speed
- Several hundred concurrent Users
- Security:
 - Will be as good as your network security
 - Usually these databases are within your network
 - Username/Passwords are decided by DB Admins



System Requirements

- **Hardware Requirement**
 - Hard Drive: 50gb and Up
 - Memory: 4gb and up
 - Processor: 2.0 GHz and up
- **Software Requirement**
 - OS Windows 2008 Standard and Up
 - .Net Framework 4.0 Included in software
 - SAP Crystal reports runtime Included in software – For Reports
 - SQL Compact 3.5 SP2 Included in software – For Database
 - Microsoft Access Database Engine 2010 Included in Software – For importing Data

Installation Process

Download IRIS, <https://www.hfssoft.com>

Download Center
To download any of the products listed below, press on the download button.

Software Systems

The **Download Center** provides complete versions of all licensed HFS software.

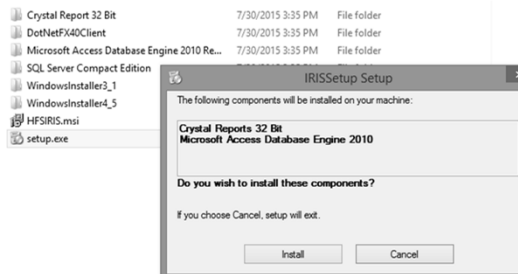
Product	Version	Date Posted	Notes	Download
Home Health Agency (1725-94)	16.26	07/10/2015	Notes	Full Version
CMHC (2088-92)	9.25	07/10/2015	Notes	Full Version
OPO (216-94)	5.33	07/10/2015	Notes	Full Version
Rural Health Clinic/FQHC (222-92)	11.30	07/10/2015	Notes	Full Version
Home Office (287-05)	1.70	07/14/2015	Notes	Full Version
California Disclosure Report (CHDR)	40.6	04/03/2015	Notes	Full Version
Renal Dialysis Facility (265-11, 265-94)	3.14	07/10/2015	Notes	Full Version
IRIS (RIS)	5.0.0.0	07/08/2015	Notes	Full Version
Hospice (1984-14, 1984-99)	1.11	07/10/2015	Notes	Full Version
Hospital (2552-10, 2552-96)	7.4	07/30/2015	Notes	Full Version
Long Term Care (LTCR)	38.1	03/06/2015	Notes	Full Version
Skilled Nursing Facility (2540-10, 2540-96)	6.9	07/10/2015	Notes	Full Version

Installation Process

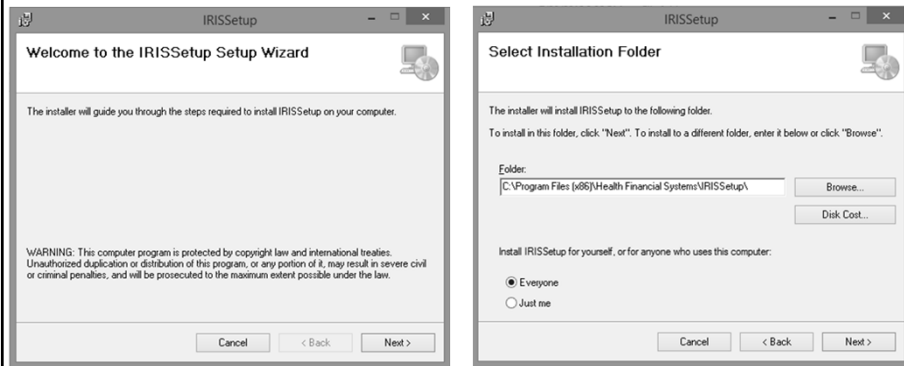
Files Included

- Crystal Report 32 Bit
- DotNetFX40Client
- Microsoft Access Database Engine 2010 Re...
- SQL Server Compact Edition
- WindowsInstaller3_1
- WindowsInstaller4_5
- HFSIRIS.msi
- setup.exe

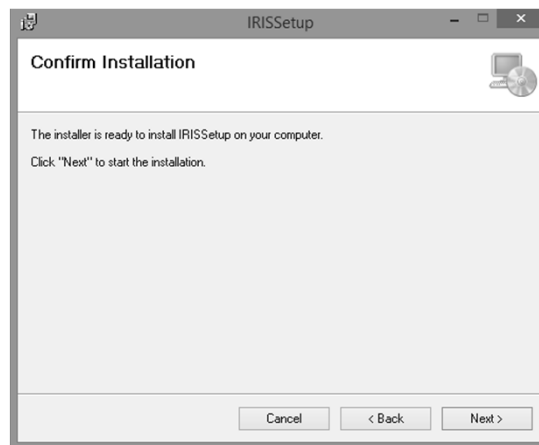
Click on setup.exe



Installation Process



Installation Process



Desktop Icon



Luke will now demonstrate

